



St Mary's Wandsworth Pier Battersea SW11

Moored along a peaceful stretch of the Thames at St Mary's Wandsworth Pier, this thoughtfully reimagined two-bedroom houseboat offers a quietly distinctive way of living, where water, light and design come together with ease. Internally, the space has been carefully considered, balancing warmth and texture with clean, modern interventions. The main living area is open and inviting, with generous rooflights drawing in natural light from above and a wood-burning stove set as a natural focal point, creating a sense of comfort through the seasons. A bespoke kitchen sits alongside, defined by simple lines, open shelving and tactile materials, connecting seamlessly to a dining area designed for slow, sociable living. Beautiful birch plywood flooring runs throughout, adding a consistent warmth and subtle, contemporary character. The bedrooms are calm and characterful, each with its own identity, while the bathroom introduces a more playful, design-led approach with bold colour and carefully chosen fittings. Throughout, each space feels both practical and considered, making full use of the boat's proportions.

KEY FEATURES

2 bedrooms

2 bathrooms

Built 1928

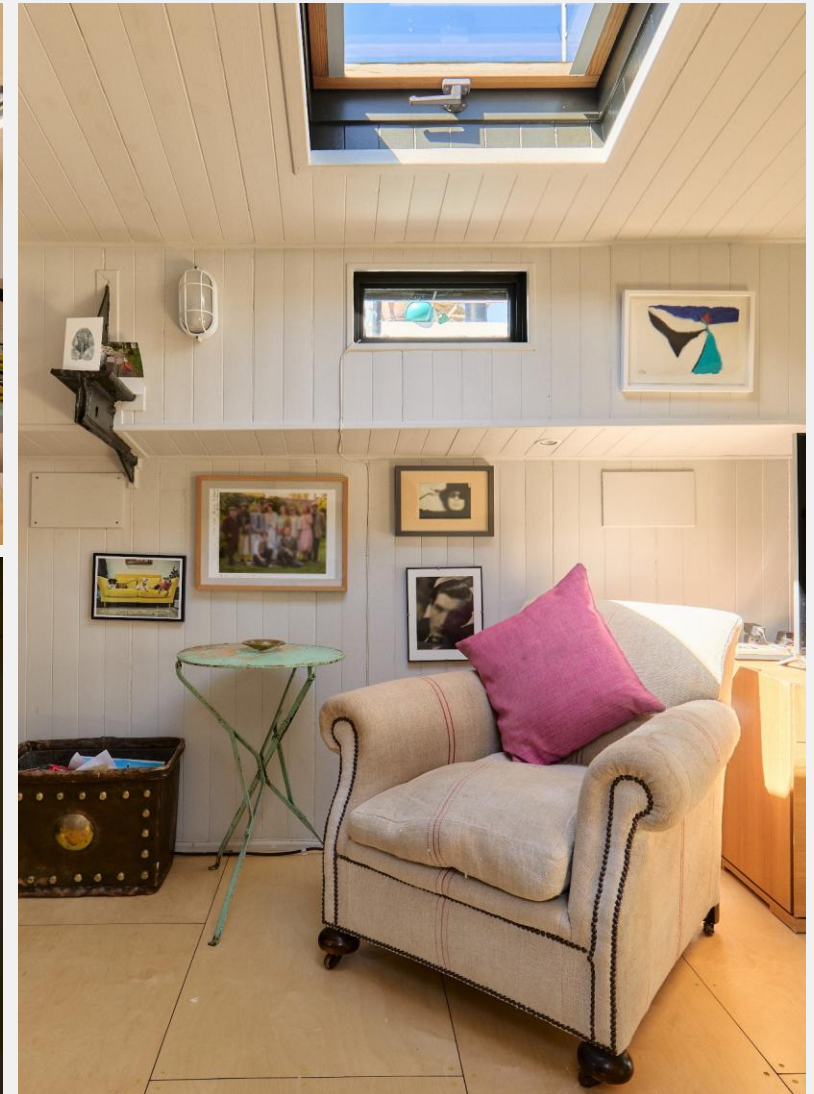
Wood-burning stove

Bespoke kitchen

Generous deck space

Excellent transportation links to the Imperial Wharf Station and Thames River Boat

Service charge £6,720 per annum approx.





KEY INFORMATION

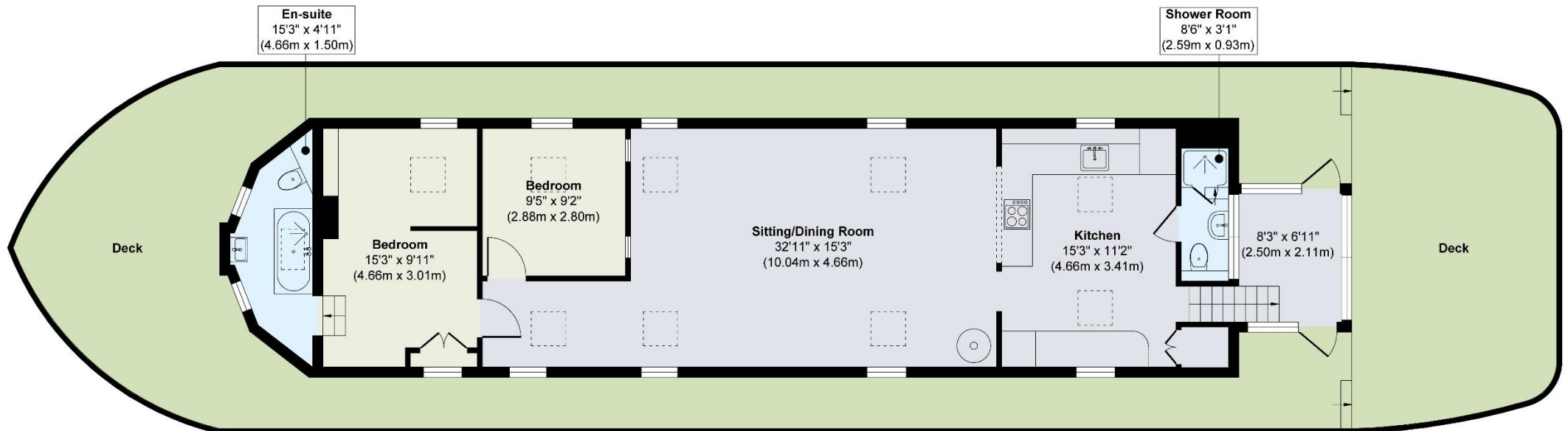
Local authority: London Borough of Wandsworth

Internal area: 1,010 sq. ft. / 93.88 sq. m.

No. of bedrooms: 2

Council tax band: A - £680.23 per annum approx.

Service charge: £6,720 per annum approx.



Floor Plan